

2019 USER FEES FOR SUBSIDIZED CHILDCARE SERVICES

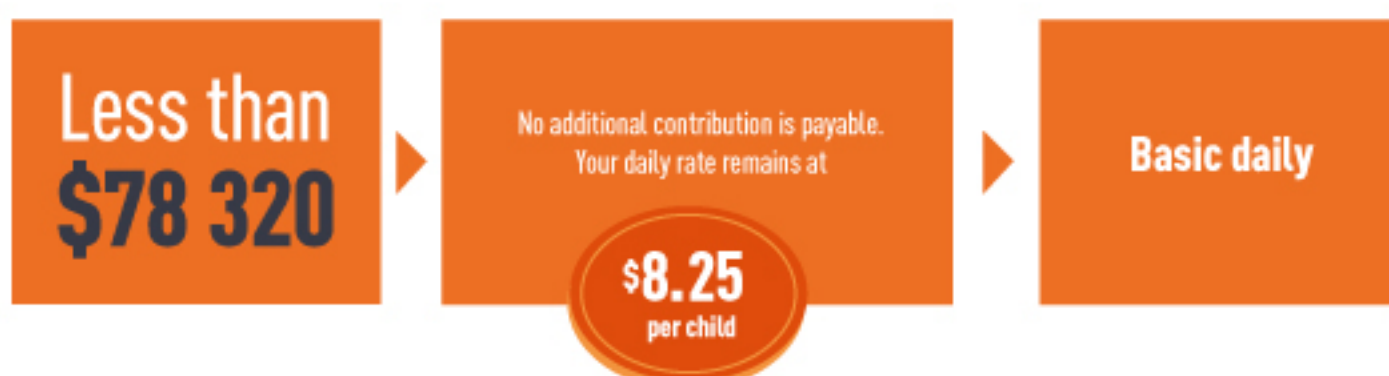


What is your family income?

What is family income?

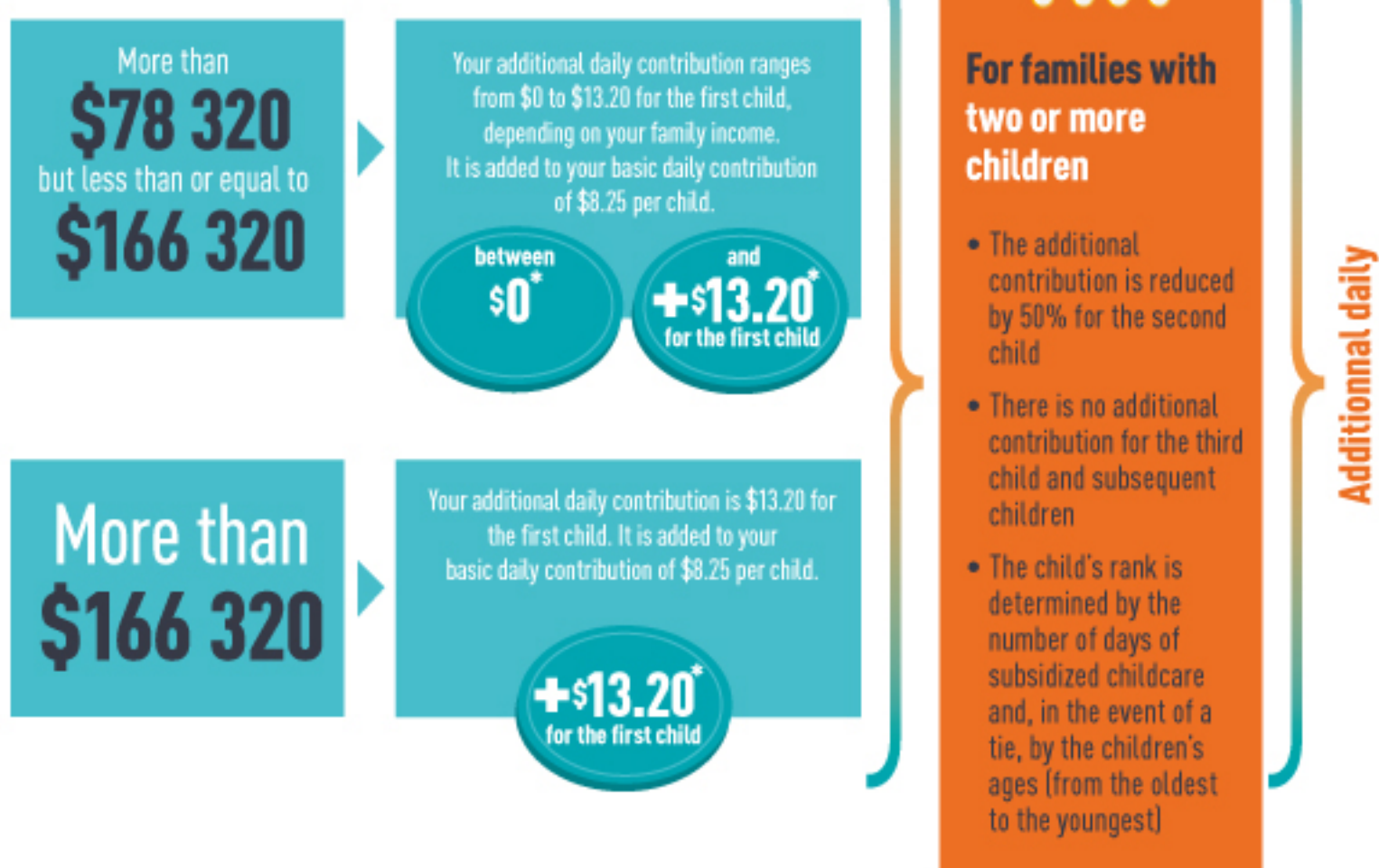
- Family income corresponds to **net income*** for 2018.
- If you have a spouse as of **December 31**, your family income refers to your net income* **plus** that of your spouse.

* As defined by Revenu Québec.



For separated parents

- The additional contribution is calculated using the family income of the parent who is responsible for the basic rate in accordance with the signed subsidized childcare services agreement.
- If separated parents share responsibility for the basic rate, the additional contribution will be calculated separately according to the family income of each parent.
- If either parent has a spouse as of December 31, their family income includes the income of their spouse.



SECOND CHILD: THE ADDITIONAL CONTRIBUTION IS REDUCED BY 50%

THIRD CHILD: NO ADDITIONAL CONTRIBUTION

HOW TO MAKE YOUR CONTRIBUTION

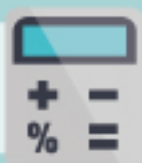
The **basic daily rate** of \$8.25 per child goes directly to your subsidized childcare service.



Any additional contribution, adjusted to your family income, is paid to Revenu Québec through source deductions or tax instalments, or when you file your tax return.

USE THESE TOOLS ON MFA.GOUV.QC.CA TO CALCULATE:

YOUR DAILY CHILDCARE RATE



Estimate the daily cost of the space occupied by your child taking into account the additional contribution.

YOUR ADDITIONAL CONTRIBUTION REQUIRED FOR SUBSIDIZED CHILDCARE SERVICES



Estimate the total amount of your additional contribution per pay period.



How to plan for your additional contribution?

- Ask your employer to withhold more Québec income tax at the source.
- If you are self-employed, increase the amount of your tax instalments.
- Set aside the amount of your additional contribution.



* On December 3, 2018, in the Update on Québec's Economic and Financial Situation, the Government announced its intention to freeze the additional subsidized childcare contribution at the level set in 2018. In addition, on March 21, 2019, in its 2019-2020 Budget Speech, the Government also announced the plan for gradual abolition of the additional contribution, which provides for the abolition, in 2019, of the additional contribution payable for families earning between \$52,220 and \$78,320. These undertakings are conditional on amendments to the applicable legislation and regulations. For information purposes, this page presents the 2019 fee levels for childcare services, adjusted to reflect the changes announced by the Government.