



台  
達  
電  
子



*Delta Components library  
for Agilent ADS Install Manual*



## 1. Preface

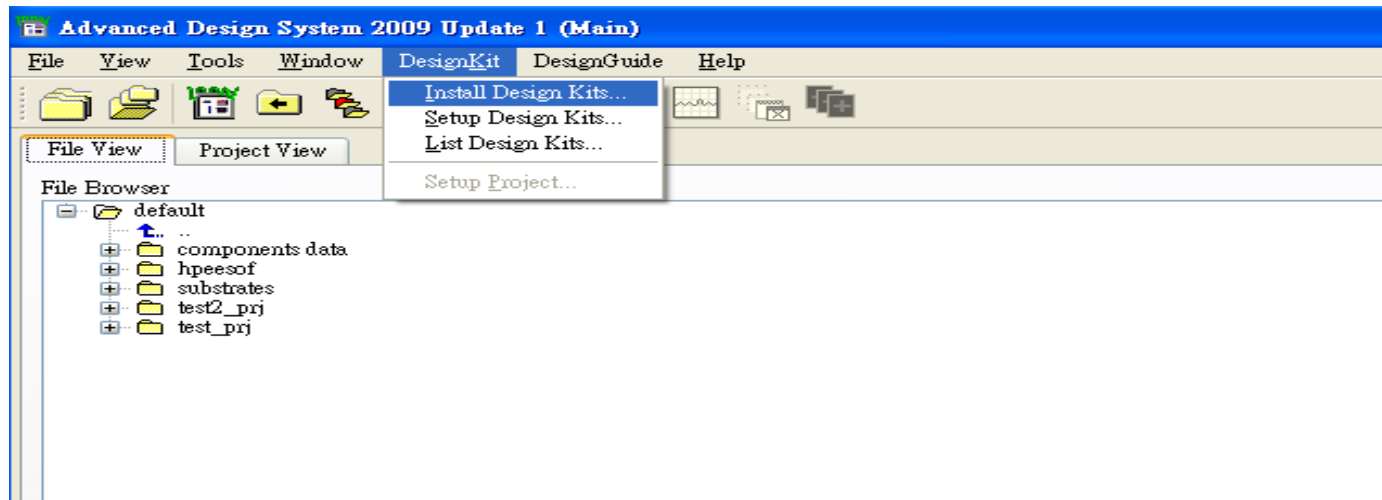
“Delta Components Library For Agilent ADS” is a useful simulation tool (design kit) for Agilent ADS, and contains measurement data of Delta electronic components. You can increase the accuracy of the schematic and recommended PCB pad of parts are included. This manual describes how to install and use Delta Components Library for Agilent ADS.

## 2. Download the Library

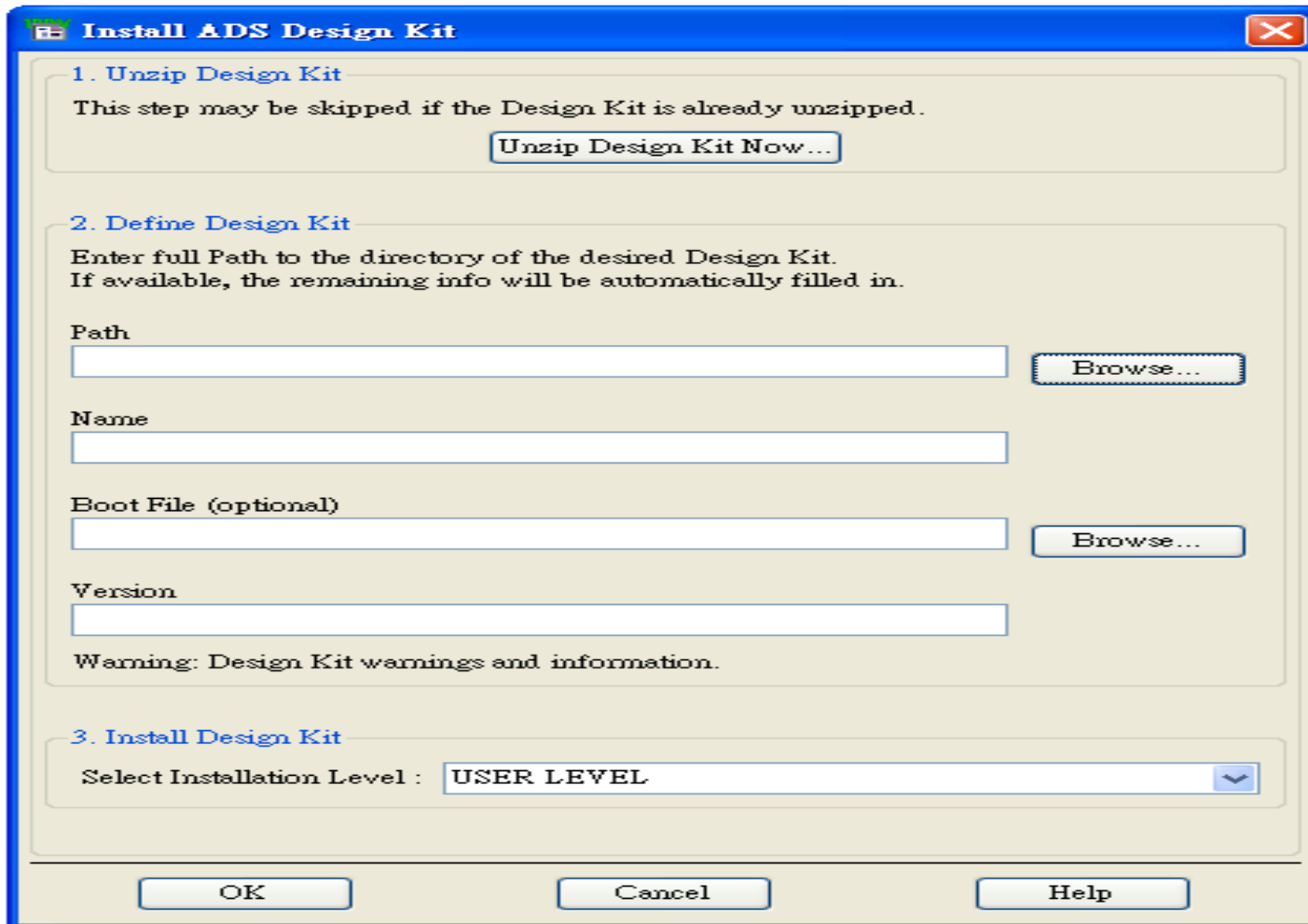
Download the library from the internet <http://www.delta.com.tw> or please contact your local sales for details.

## 3. Installing the Library

- 1) Start ADS.
- 2) Select “Design Kit” -> “Install Design Kits...” in the main window.

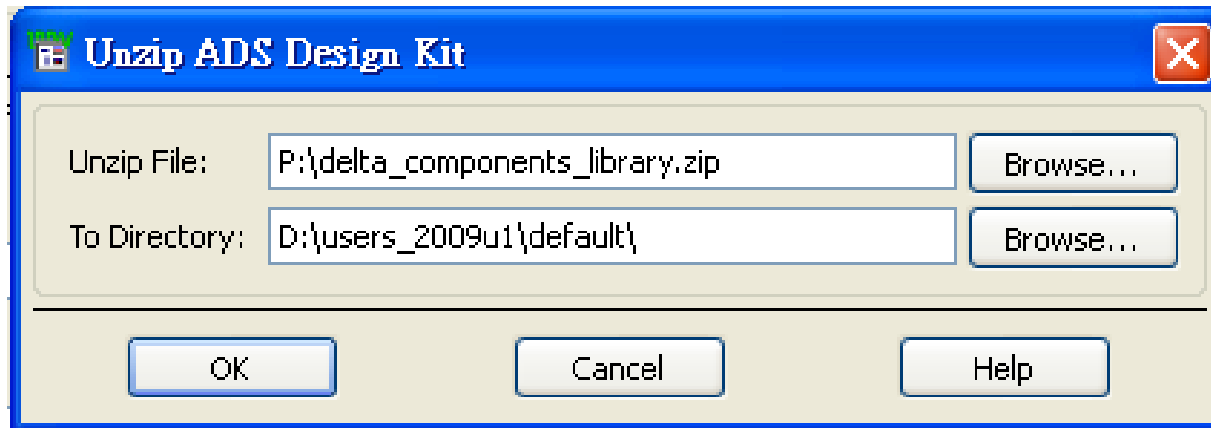


3) Click the “Unzip Design Kit Now...” button in the “Install ADS Design Kit” window, then “Unzip ADS Design Kit ” window will appear.



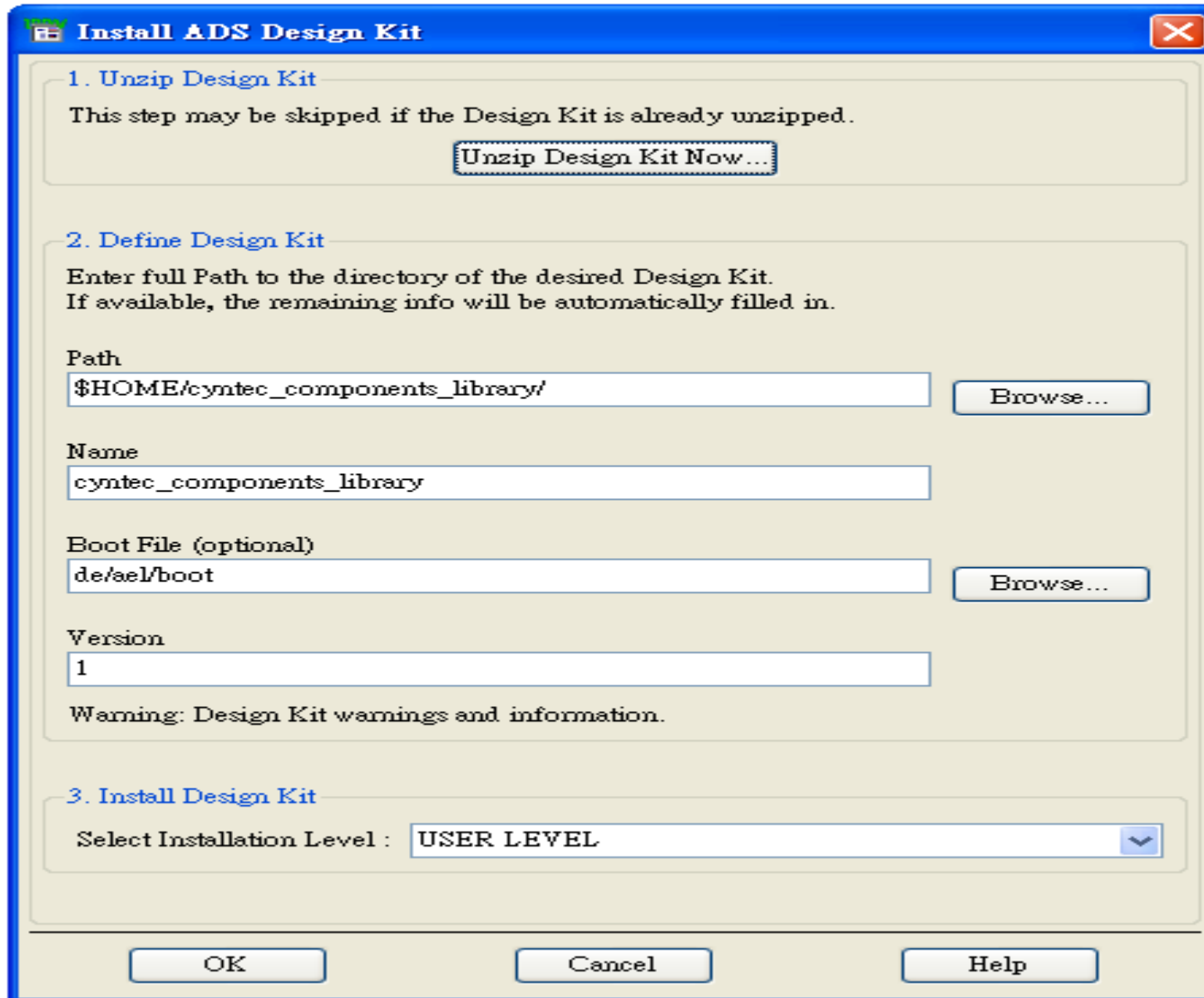


4) Set the downloaded Zip file and the directory to install in the “Unzip ADS Design Kit” window.





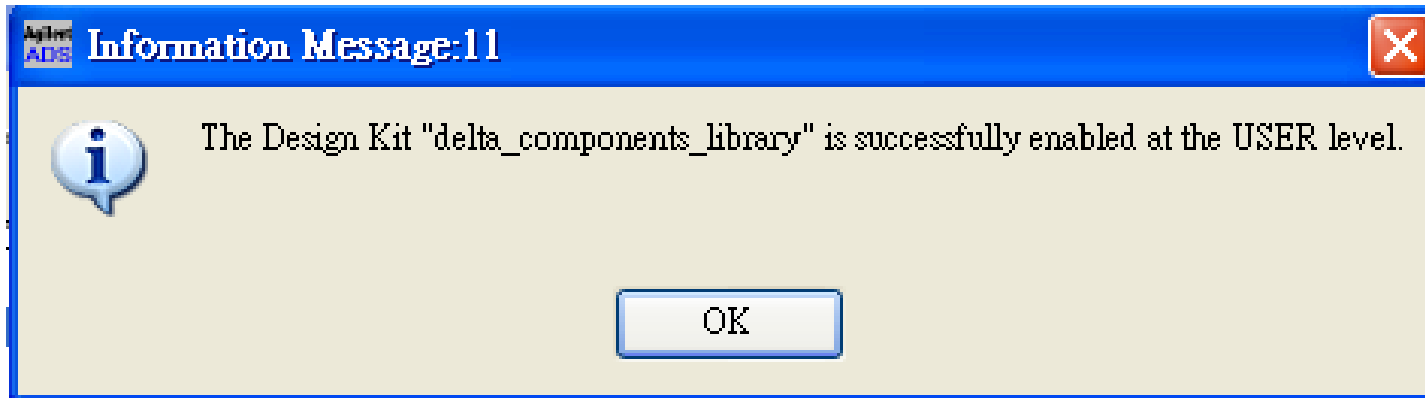
5) Click “OK” button, then the library will be unzipped automatically to the install directory, and “Path”, “Name”, “Boot File” and “Version” will be automatically entered.





6) Select User Level at “3. Install Design Kit” in the “Install ADS Design Kit” window.

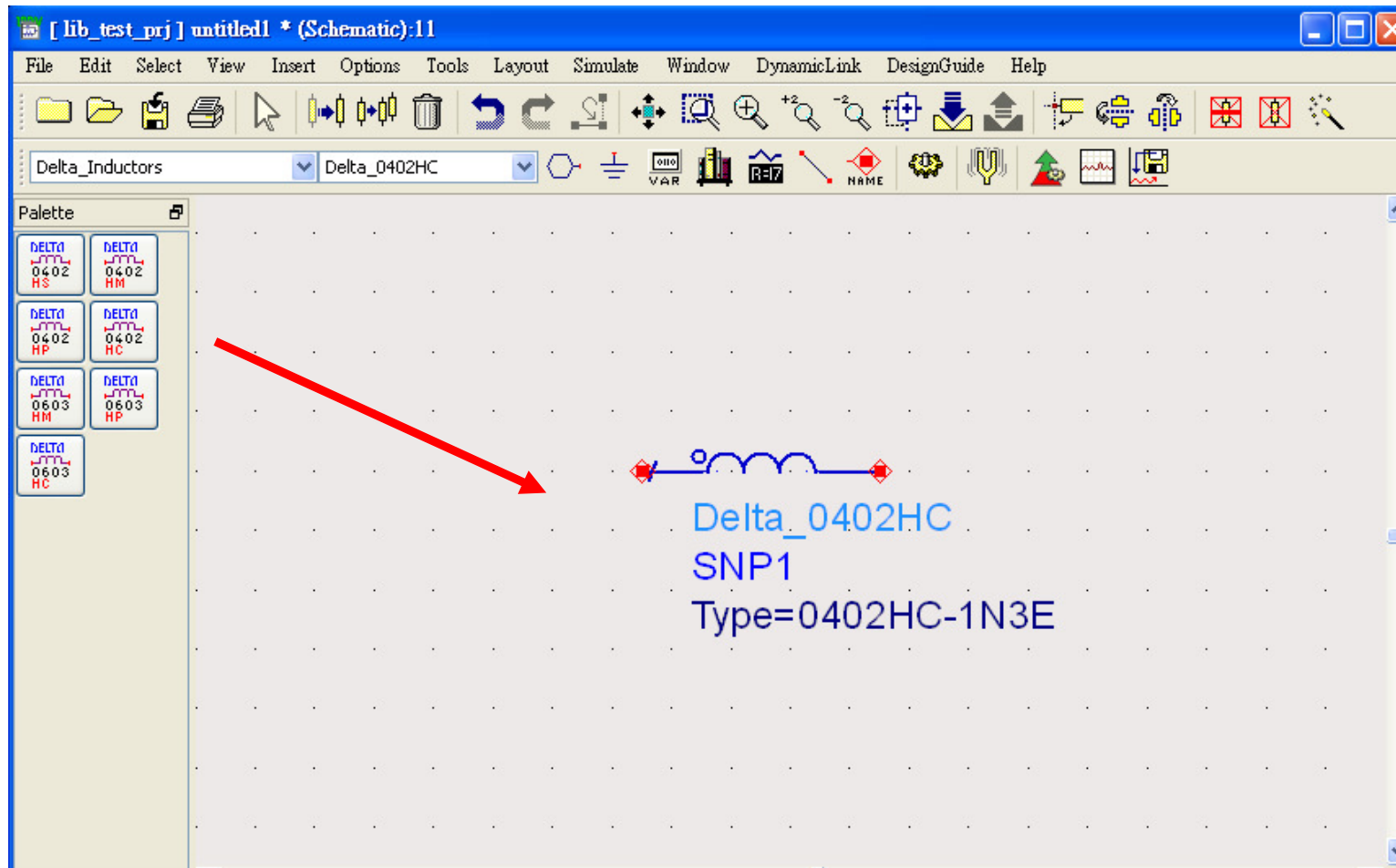
7) Click “OK” button, then the message “The Design Kit “delta\_components\_library” is successfully enabled at the USER level” will be appear after the library will be loaded. Click “OK” button again to close the message window.





## 4. Simulate By Using the Delta Components

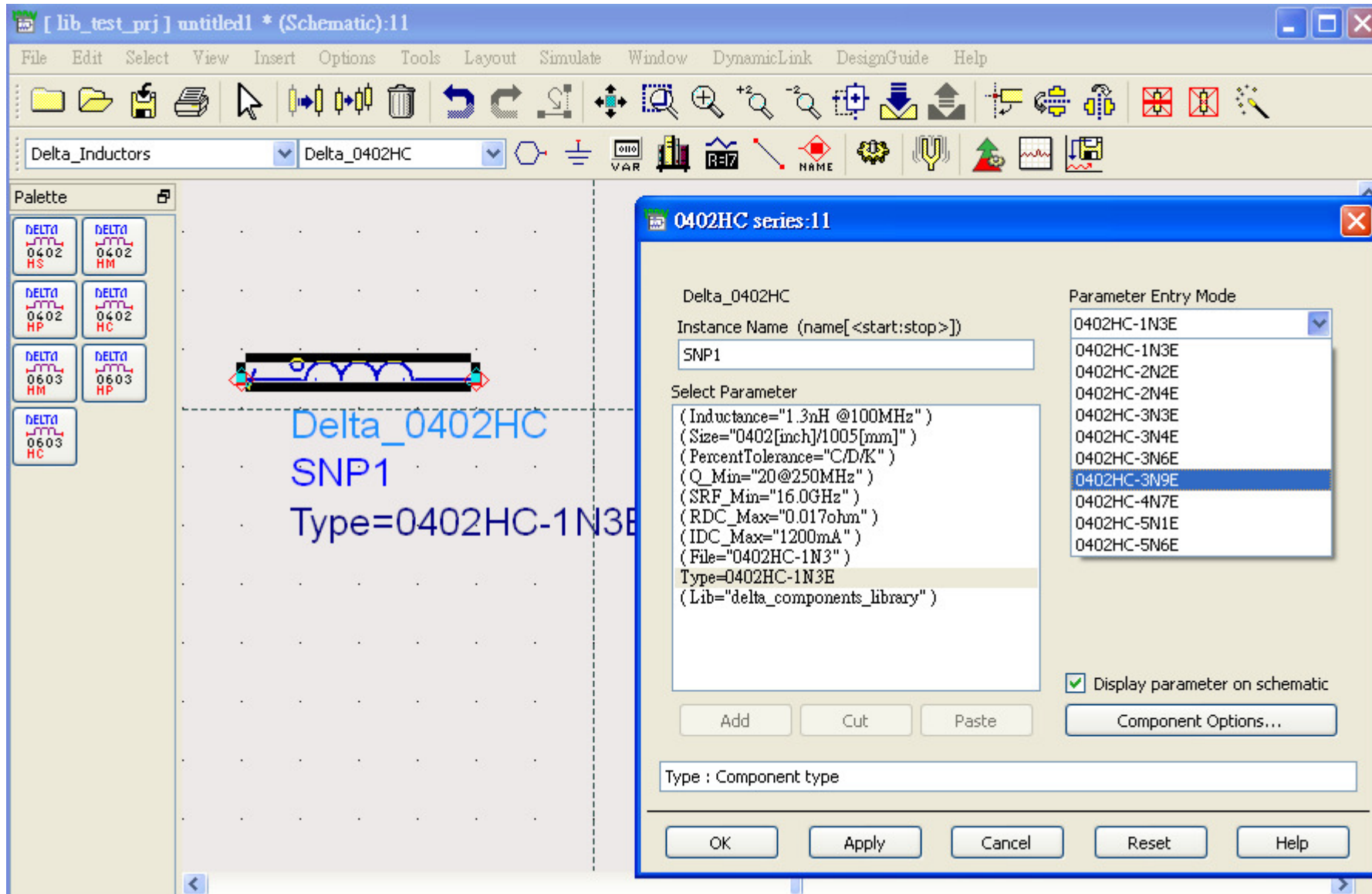
- 1) Start ADS.
- 2) Open the schematic window.
- 3) Select “Delta Components” at the component palette list in the schematics window, and select the component you use. Then put the component into the schematic.







4) Double-Click on the component you set, and select inductor you use in the Type parameter-selection window.



## 5) Complete the selection for the Delta components .

